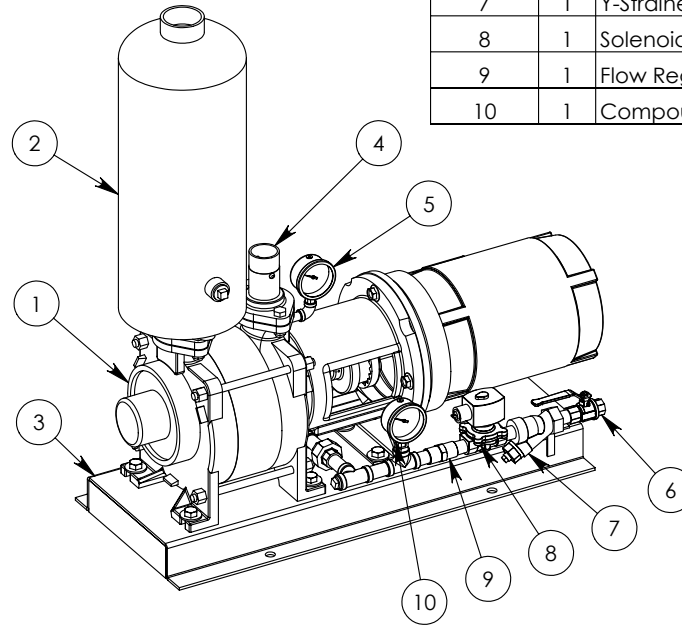
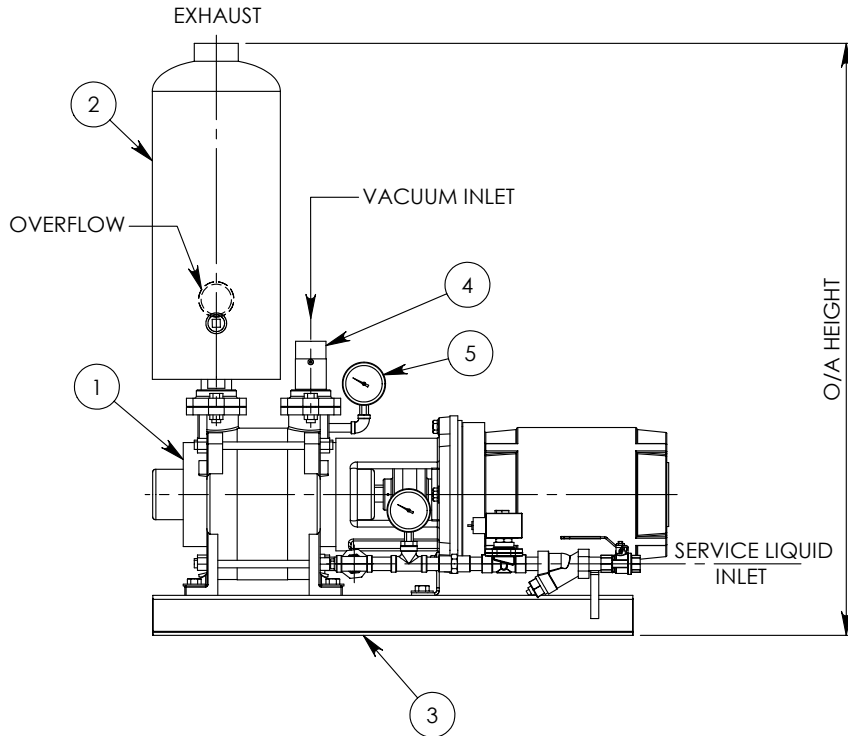


"SOT" ONCE-THRU VACUUM SYSTEM



ITEM NO.	QTY.	DESCRIPTION
1	1	Vacuum Pump/Motor Assembly
	1	Travaini Vacuum Pump
	1	MOTOR 1800RPM 3/60 TEFC C-FLANGE
	2	Coupling Flange
	1	Coupling Insert
	1	Lantern
	1	Adapter Flange
	1	Foot
2	1	Separator
3	1	Baseplate
4	1	Inlet Check Valve
5	1	Vacuum Gauge (0-30" Hg)
6	1	Isolation Valve
7	1	Y-Strainer
8	1	Solenoid Valve
9	1	Flow Regulator
10	1	Compound Gauge

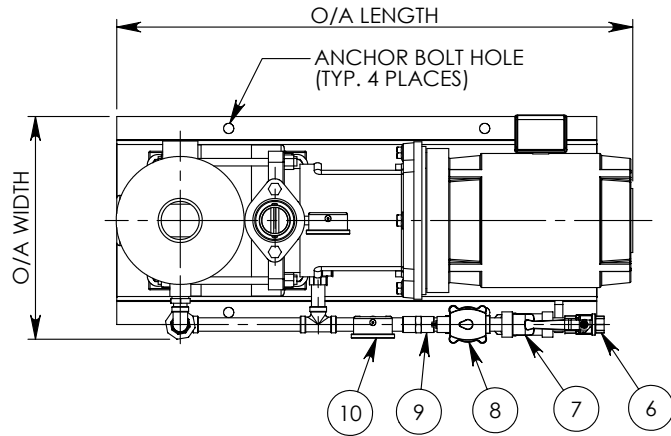


Premier Fluid Systems
Canadian Home of Travaini Pumps

4161 Morris Dr. - Unit 5 * Burlington * Ontario * L7L 5L5 * Website: www.pfspumps.com
Tel: 1-800-461-2611 or 905-637-2611 * Fax: 905-333-4722 * email: info@pfspumps.com

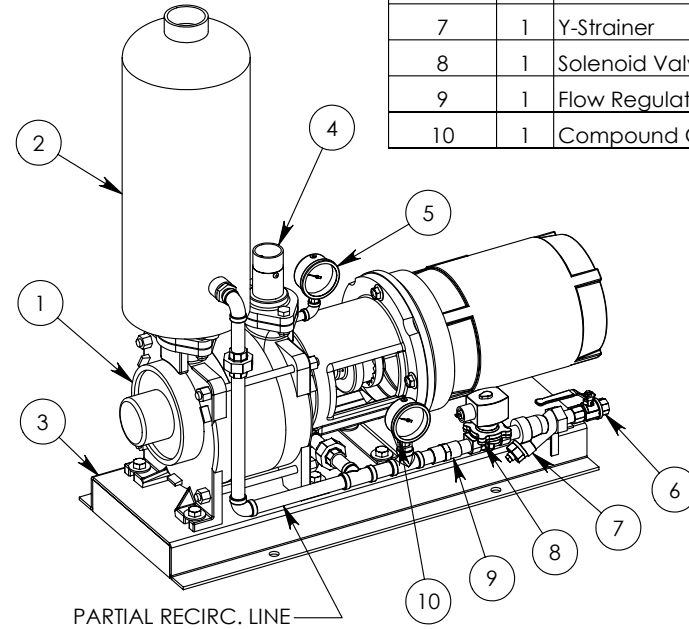
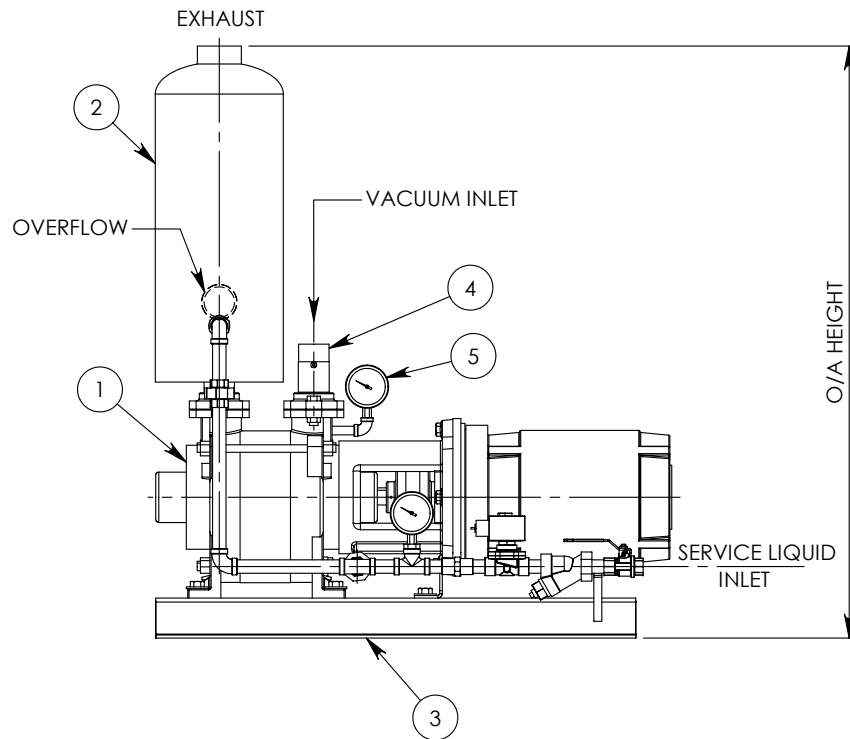
DATE : MARCH 2002

N°.: 2.5



"SPR" PARTIAL RECOVERY VACUUM SYSTEM

ITEM NO.	QTY.	DESCRIPTION
1	1	Vacuum Pump/Motor Assembly
	1	Travaini Vacuum Pump
	1	MOTOR 1800RPM 3/60 TEFC C-FLANGE
2	1	Coupling Flange
	1	Coupling Insert
	1	Lantern
	1	Adapter Flange
	1	Foot
2	1	Separator
3	1	Baseplate
4	1	Inlet Check Valve
5	1	Vacuum Gauge (0-30" Hg)
6	1	Isolation Valve
7	1	Y-Strainer
8	1	Solenoid Valve
9	1	Flow Regulator
10	1	Compound Gauge



Premier Fluid Systems
Canadian Home of Travaini Pumps

4161 Morris Dr. - Unit 5 * Burlington * Ontario * L7L 5L5 * Website: www.pfspumps.com
Tel: 1-800-461-2611 or 905-637-2611 * Fax: 905-333-4722 * email: info@pfspumps.com

DATE : MARCH 2002

N°.: 2.7