

# ENGINEERED STANDARD SYSTEMS SOT & SPR

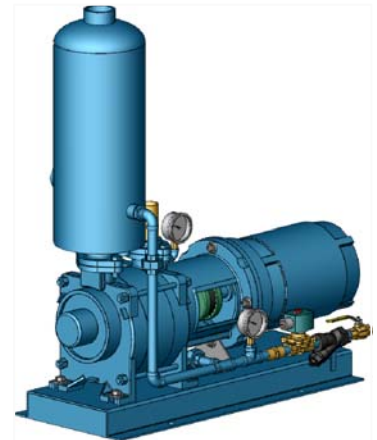
## ONCE THROUGH AND PARTIAL RECOVERY SYSTEMS - TRS/TRM/TRV

System Model	Nominal Data At 20"Hg & 60Hz		End Vacuum Torr. (mmHgAbs.)	Inlet Pipe Conn.	Water Pipe Conn.	Pump Model	Weight Approx. Kg.
	Motor HP	ACFM					
TRW 20M-SOT	1½	15	30	1"	3/8"	TRMB 25-30/GH	67
TRW 20S-SOT	1½	17	100	1¼"	3/8"	TRSE 32-20/C/RZ	116
TRW 40M-SOT	3	35	30	1"	3/8"	TRMB 32-50/GH	70
TRW 38S-SOT	3	37	100	1¼"	3/8"	TRSE 32-50/C/RZ	122
TRW 40S-SOT	3	40	100	1½"	½"	TRSE 40-55/C/RZ	127
TRW 50M-SOT	5	50	30	1½"	½"	TRMB 32-75/GH	122
TRW 70V-SOT	7½	75	25	1½"	½"	TRVB 40-110/GH	209
TRW 70S-SOT	5	76	100	1½"	½"	TRSE 40-100/C/GH	209
TRW 100V-SOT	7½	100	25	1½"	½"	TRVB 40-150/GH	263
TRW 100S-SOT	7½	100	100	1½"	½"	TRSE 40-150/C/GH	268
TRW 150V-SOT	10	145	25	2"	½"	TRVA 50-220/C/GH	360
TRW 150M-SOT	10	150	25	1½"	½"	TRMB 40-200/C/GH	160
TRW 150S-SOT	10	150	100	2"	¾"	TRSE 50-220/C/GH	365
TRW 200V-SOT	15	200	25	2½"	¾"	TRVA 65-300/C/GH	505
TRW 300V-SOT	20	300	25	2½"	¾"	TRVA 65-450/1C/GH	478
TRW 400S-SOT	25	385	100	4"	1"	TRSC 100-550/C/F	562
TRW 500S-SOT	40	510	100	4"	1"	TRSC 100-700/C/F	773
TRW 700S-SOT	50	750	150	5"	1¼"	TRSE 125-1250/C/F	915
TRW 900S-SOT	60	920	150	5"	1¼"	TRSE 125-1550/C/F	1045

### Optional accessories, mounted at pump suction side:

Vacuum relief valve, spring loaded	P/N VRO-038-AA840A P/N VRO-034-AA308 P/N VRO-852-125C000	For systems TRW 20M through TRW 70S For systems TRW 70V through TRW 300V For systems TRW 400S through TRW 900S
Inlet Filter Assembly	P/N FIL-100-CSL842 P/N FIL-125-CSL842 P/N FIL-150-CSL848 P/N FIL-200-CSL850 P/N FIL-300-CT348 P/N FIL-400-CT348 P/N FIL-500-CSL345	For systems TRW 20M and TRW 40M For systems TRW 20S, TRW 38S and TRW 40S For systems TRW 50M through TRW 100S For systems TRW 150V and TRW 150S For systems TRW 200V and TRW 300V For systems TRW 400S and TRW 500S For systems TRW 700S and TRW 900S

**SOT = SIMPLEX ONCE THROUGH**  
**SPR = SIMPLEX PARTIAL RECOVERY**



**Premier Fluid Systems**  
Canadian Home of Travaini Pumps

4161 Morris Dr. - Unit 5 \* Burlington \* Ontario \* L7L 5L5 \* Website: [www.pfspumps.com](http://www.pfspumps.com)  
Tel: 1-800-461-2611 or 905-637-2611 \* Fax: 905-333-4722 \* email: [info@pfspumps.com](mailto:info@pfspumps.com)

**DATE : FEBRUARY 2009**

**N°.: 2.2**