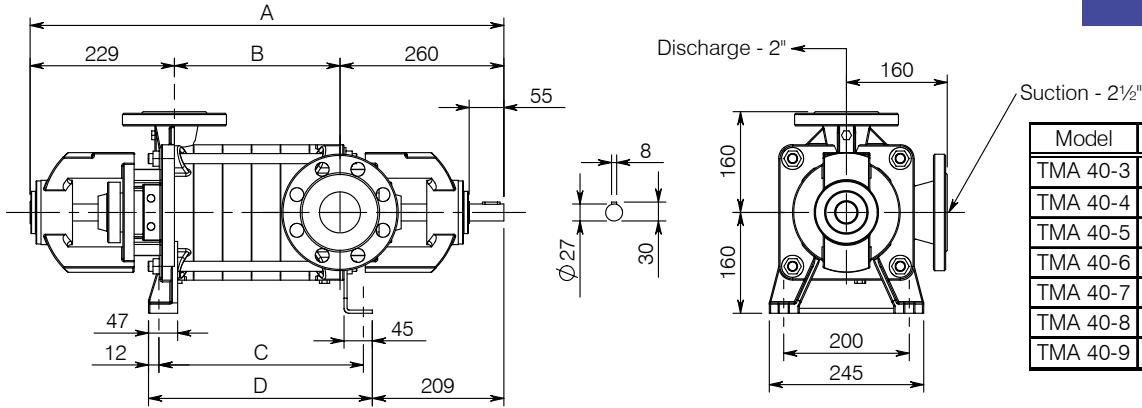


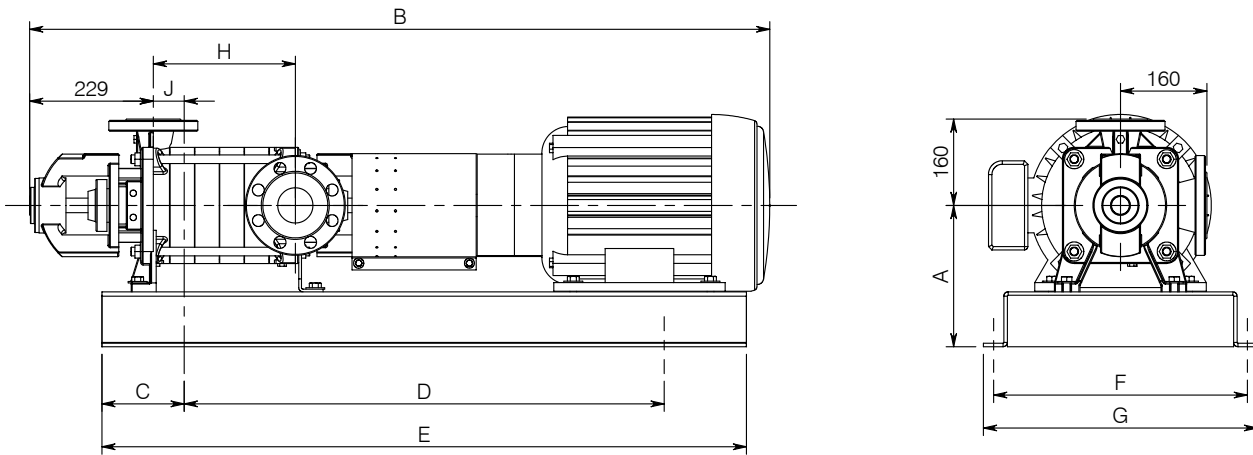
## Bareshaft Construction

**SERIES TMA 40**



| Model    | A   | B   | C   | D   | Weight |
|----------|-----|-----|-----|-----|--------|
| TMA 40-3 | 660 | 171 | 231 | 263 | 62     |
| TMA 40-4 | 706 | 217 | 277 | 309 | 69     |
| TMA 40-5 | 752 | 263 | 323 | 355 | 77     |
| TMA 40-6 | 798 | 309 | 369 | 401 | 84     |
| TMA 40-7 | 844 | 355 | 415 | 447 | 92     |
| TMA 40-8 | 890 | 401 | 461 | 493 | 99     |
| TMA 40-9 | 936 | 447 | 507 | 539 | 107    |

## Base-Mounted Construction



| PUMP MODEL | MOTOR FRAME | A    | B    | C     | D    | E    | F    | G   | H    | J    | BASE PLATE | WEIGHT (Kg.) |       |     |     |    |     |     |     |
|------------|-------------|------|------|-------|------|------|------|-----|------|------|------------|--------------|-------|-----|-----|----|-----|-----|-----|
| 40-3       | 254T        | 264  | 1235 | 152.4 | 889  | 1194 | 470  | 508 | 171  | 0    | 907        | 250          |       |     |     |    |     |     |     |
|            | 256T        |      | 1279 |       |      |      |      |     |      |      |            | 259          |       |     |     |    |     |     |     |
| 40-4       | 256T        | 1325 | 279  |       |      |      |      |     | 1323 | 965  |            | 1270         | 309   | 217 | 25  | 57 | 909 | 266 |     |
|            | 284TS       | 1371 |      |       |      |      |      |     |      |      |            |              |       |     |     |    |     | 284 |     |
| 40-5       | 256T        | 264  | 1371 |       |      |      |      |     | 279  | 1411 |            | 1449         | 324TS | 305 | 263 | 64 | 70  | 911 | 266 |
|            | 284TS       | 1365 | 284  |       |      |      |      |     |      |      |            |              |       |     |     |    |     |     |     |
|            | 286TS       | 1403 | 307  |       |      |      |      |     |      |      |            |              |       |     |     |    |     |     |     |
| 40-6       | 284TS       | 279  | 1411 |       | 229  | 1067 | 1524 | 495 | 533  | 309  | 57         | 909          | 299   |     |     |    |     |     |     |
|            | 286TS       | 1449 | 326  |       |      |      |      |     |      |      |            |              |       |     |     |    |     |     |     |
| 40-7       | 286TS       | 279  | 1495 |       | 229  | 1067 | 1524 | 495 | 533  | 355  | 76         | 911          | 326   |     |     |    |     |     |     |
|            | 324TS       | 305  | 1525 |       |      |      |      |     |      |      |            |              | 390   |     |     |    |     |     |     |
| 40-8       | 286TS       | 279  | 1541 |       | 229  | 1067 | 1524 | 495 | 533  | 401  | 64         | 911          | 343   |     |     |    |     |     |     |
|            | 324TS       | 305  | 1571 | 406   |      |      |      |     |      |      |            |              |       |     |     |    |     |     |     |
|            | 326TS       | 305  | 1609 | 350   |      |      |      |     |      |      |            |              |       |     |     |    |     |     |     |
| 40-9       | 324TS       | 305  | 1617 | 203   | 1118 | 559  | 610  | 447 | 83   | 102  | 912        | 414          |       |     |     |    |     |     |     |
|            | 326TS       | 330  | 1655 |       |      |      |      |     |      |      |            | 441          |       |     |     |    |     |     |     |
|            | 364TS       | 330  | 1671 |       |      |      |      |     |      |      |            | 421          |       |     |     |    |     |     |     |
|            |             |      |      |       |      |      |      |     |      |      |            | 449          |       |     |     |    |     |     |     |
|            |             |      |      |       |      |      |      |     |      |      |            | 510          |       |     |     |    |     |     |     |

Flanges are R.F. drilled for 300 lbs. ANSI mating flanges

Dimensions in mm



**Premier Fluid Systems**  
Canadian Home of Travaini Pumps

4161 Morris Dr. - Unit 5 \* Burlington \* Ontario \* L7L 5L5 \* Website: [www.pfspumps.com](http://www.pfspumps.com)  
Tel: 1-800-461-2611 or 905-637-2611 \* Fax: 905-333-4722 \* email: [info@pfspumps.com](mailto:info@pfspumps.com)

DATE : MARCH 2002

Nº.: 14.13